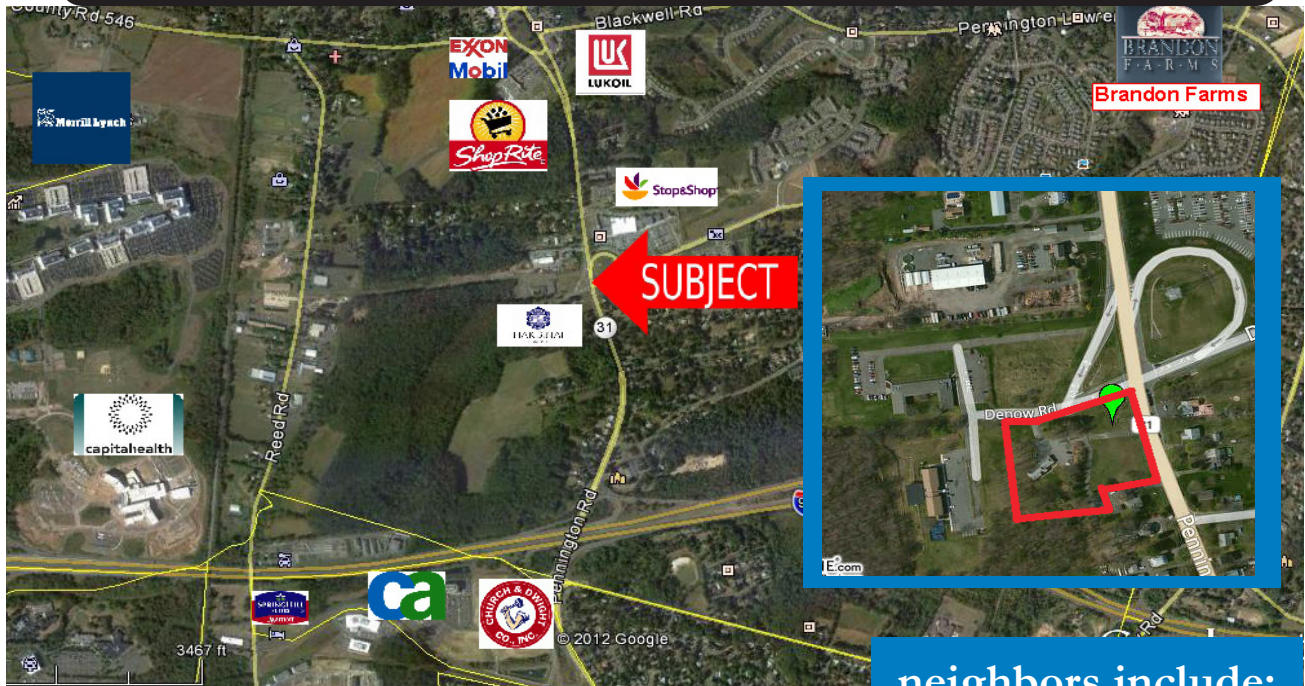


2421 Route 31

Hopewell Township, NJ 08534

a 3 - 5 Acre site on busy Route 31 in Hopewell Township



neighbors include:

property information

- ◆ Commercial Development Parcel
- ◆ 3 - 5 Acre site on Route 31/Pennington Rd.
- ◆ Signalized Intersection
- ◆ Across from Hopewell Crossing Mall
- ◆ Level Lot w/204' of Highway Frontage
- ◆ Pennington Address - Hopewell Township

Stop & Shop
Capital Health
Merrill Lynch
Shop Rite

0.7 miles from Rt 95

traffic count:
>31,500 vpd

FOR MORE INFORMATION OR A PRIVATE SHOWING:

Paul McArthur

609-466-0400

pim@trilliumrealty.com

Mark Bennison

609-466-0400

mcb@trilliumrealty.com



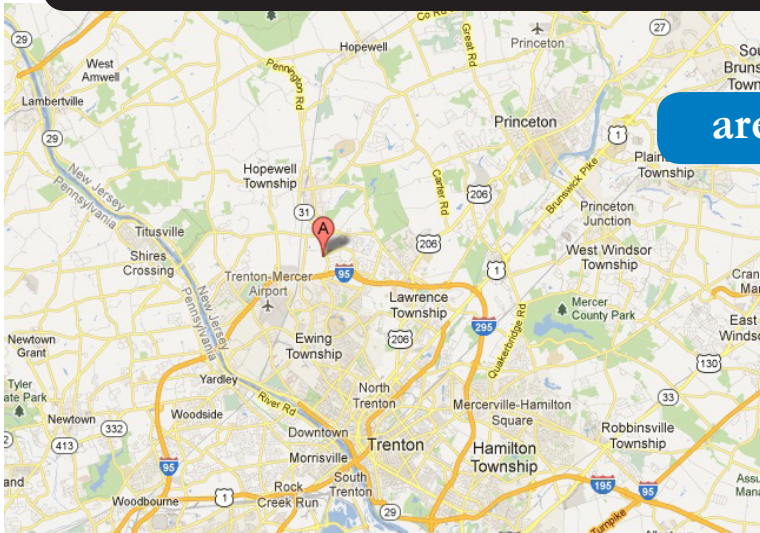
Trillium Realty Advisors, L.L.C.
83 Princeton Avenue, Hopewell, NJ 08525

Information concerning this offering is from sources deemed reliable, but no warranty is made to the accuracy thereof and it is submitted subject to errors, omissions, change of prices or other conditions, prior sale or lease or withdrawal without notice.

2421 Route 31

Hopewell Township, NJ 08534

a 3 - 5 Acre site on busy Route 31 in Hopewell Township



area map

property highlights

- ◆ Retail, Office, or Medical Office
- ◆ Restaurants or Banking
- ◆ Public Gas, Electric, and Water
- ◆ Private Septic - possible Sewer
- ◆ 1 or 2 Pad Sites possible
- ◆ Sale or Ground Lease possible
- ◆ Lot to be Subdivided

neighbors



hopewell crossing



capital health pennington

FOR MORE INFORMATION OR A PRIVATE SHOWING:

Paul McArthur

609-466-0400

pim@trilliumrealty.com

Mark Bennison

609-466-0400

mcb@trilliumrealty.com



Trillium Realty Advisors, L.L.C.
83 Princeton Avenue, Hopewell, NJ 08525

Information concerning this offering is from sources deemed reliable, but no warranty is made to the accuracy thereof and it is submitted subject to errors, omissions, change of prices or other conditions, prior sale or lease or withdrawal without notice.